

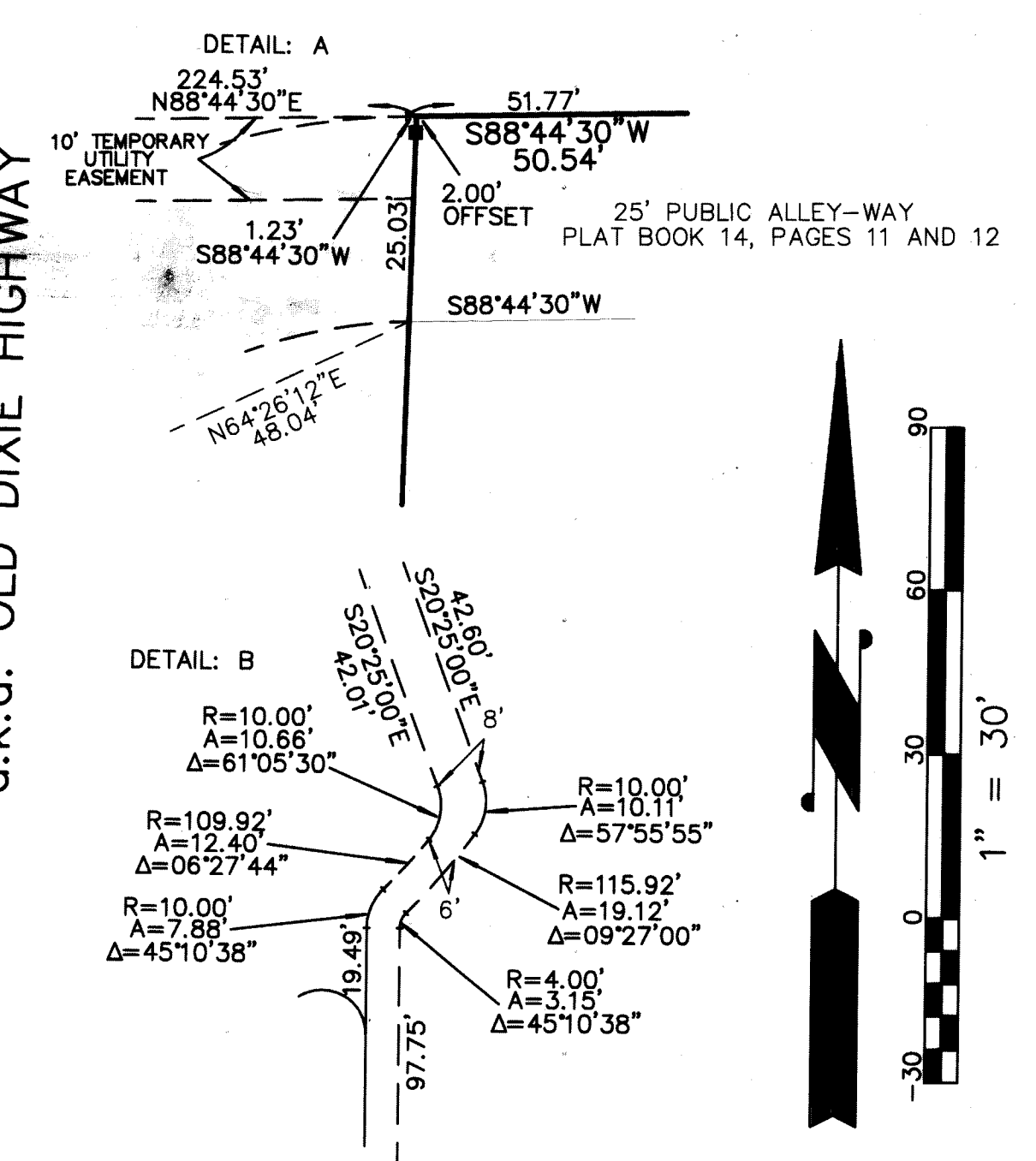
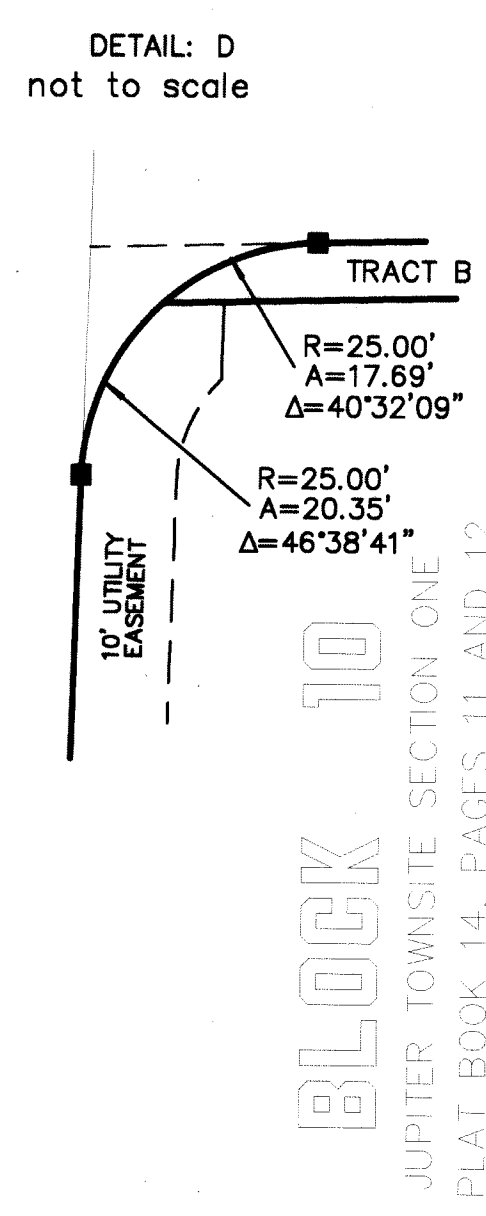
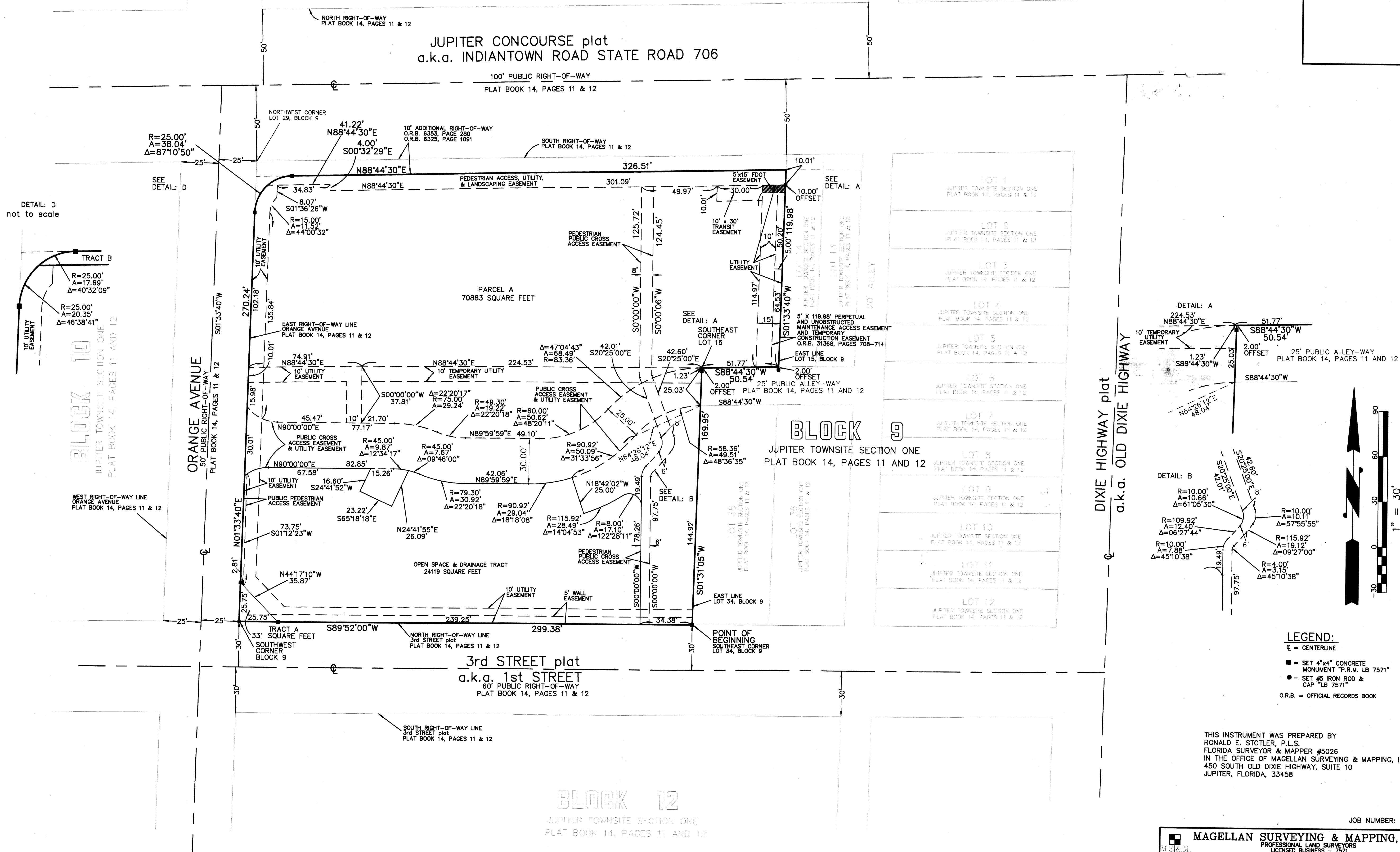
CIRCLE K STORE #5338

BEING A REPLAT OF
 LOTS 15 THROUGH 34, BLOCK 9, JUPITER TOWNSITE SECTION ONE
 PLAT BOOK 14, PAGES 11 AND 12
 PUBLIC RECORDS OF PALM BEACH COUNTY, FLORIDA
 LYING IN THE SOUTHEAST QUARTER OF
 SECTION 1, TOWNSHIP 41 SOUTH, RANGE 42 EAST
 TOWN OF JUPITER
 PALM BEACH COUNTY, FLORIDA

AUGUST 2020

PAGE 2 OF 2

27



- LEGEND:**
- ⊖ = CENTERLINE
 - = SET 4"x4" CONCRETE MONUMENT "P.R.M. LB 7571"
 - = SET #5 IRON ROD & CAP "LB 7571"
 - O.R.B. = OFFICIAL RECORDS BOOK

THIS INSTRUMENT WAS PREPARED BY
 RONALD E. STOTLER, P.L.S.
 FLORIDA SURVEYOR & MAPPER #5026
 IN THE OFFICE OF MAGELLAN SURVEYING & MAPPING, INC.
 450 SOUTH OLD DIXIE HIGHWAY, SUITE 10
 JUPITER, FLORIDA, 33458

JOB NUMBER: 13-118

MAGELLAN SURVEYING & MAPPING, INC.
 PROFESSIONAL LAND SURVEYORS
 LICENSED BUSINESS - 7571
 450 S. OLD DIXIE HIGHWAY, SUITE 10
 JUPITER, FLORIDA 33458
 561-746-8745 FAX 561-746-9632 E-mail info@magellansurveying.com